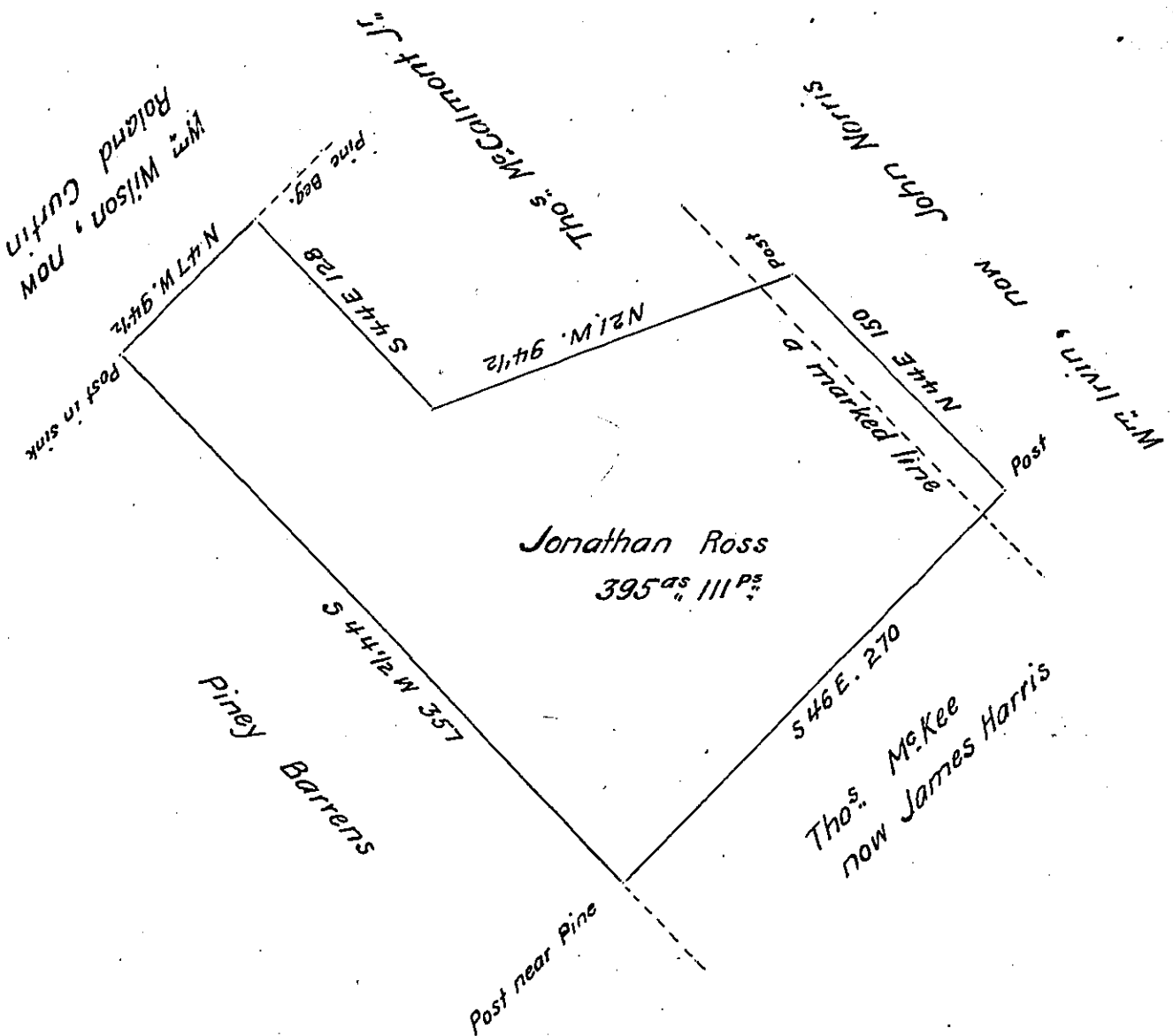


FORM No 1.



Situate in Nittany Valley, former Centre, now Walker Township Centre County containing three hundred and ninety five Acres one hundred and eleven perches and allowance of six per Cent for roads &c - Surveyed the 22^d day of March 1820 in pursuance of a warrant granted to Jonathan Ross bearing date the 11th day of December A.D. 1804

The improvements on the above described tract of land consists of a square log House 22 by 30 feet, a large double Barn, with about sixty Acres of Cleared land, W^m Adamson & family now residing on the same first improved in March 1801.

To Jacob Spangler Esquire
Surveyor General of Pennsylvania

W^m Kerr D.S.

IN TESTIMONY that the above is a copy of the original remaining on file in the Department of Internal Affairs of Pennsylvania, made conformably to an Act of Assembly approved the 16th day of February, 1833, I have hereunto set my Hand and caused the Seal of said Department to be affixed at Harrisburg, this third day of October 1907

Henry Howard
Secretary of Internal Affairs.